



### Installing Q-Lab and 8821Q-R Initial Connection

---

#### Overview

This Application Note will guide you through the installation & setup of the Q-Lab Software as well as the making an initial connection to the 8821Q-R.



**CAUTION:** This software is specifically for the 8821Q-R. Be sure that your product is an 8821Q-R before proceeding!

#### How Do I Obtain a Copy of the Q-LAB Software

The Q-Lab Software is provided with each 8821Q-R and is located on the included 8821Q-R USB Flash Drive within the *Q-Lab Software* Folder.

To access the installation file located on the 8821Q-R USB Flash Drive, insert the device into an available USB port on a PC or Laptop Computer and copy the "Q-Lab X.X.X.msi" file to a convenient location on your local hard drive.



**NOTE:** In the event you are unable to locate your 8821Q-R USB Flash Drive, send a request with the serial number of the 8821Q-R to [support@trilithic.com](mailto:support@trilithic.com) in order to receive an authorized and current revision of the Q-Lab Software.

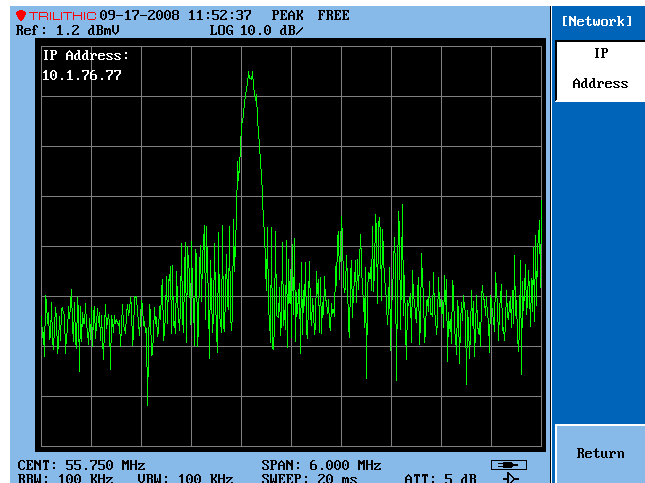
For Additional Help Contact  
Trilithic Applications Engineering  
1-800-344-2412 or 317-895-3600  
[support@trilithic.com](mailto:support@trilithic.com) or  
[www.trilithic.com](http://www.trilithic.com)

Installing Q-Lab and 8821Q-R Initial Connection  
P/N 0010275045 – Rev 9/08  
1 of 5

## Set the IP Address of the 8821Q-R

To set the IP Address of the 8821Q-R, perform the following steps;

1. Obtain the IP address of the PC or Laptop Computer that the Q-Lab Software will be installed on.
2. Turn on the 8821Q-R.
3. Press the **CONFIG** Button on the 8821Q-R Keypad.
4. Press the **Comm Settings** Softbutton.
5. Press the **Network** Softbutton.
6. Use the keypad to enter an IP address and then press the **ENTER** Button.

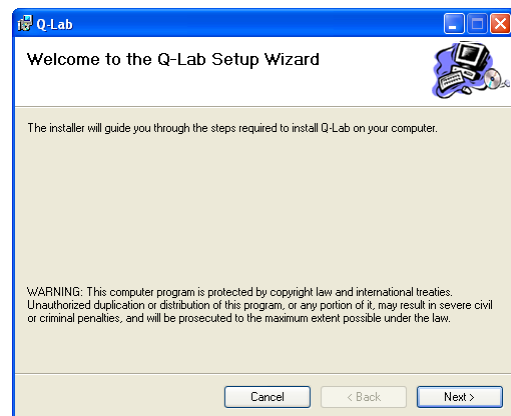


For example if the IP Address of the PC or Laptop Computer is 10.1.31.30 then set the IP address of the 8821Q-R to 10.1.76.77; by changing the values of the last network and local position in the IP Address, or just the last local position.

## Install the Q-Lab Software

To install the Q-Lab Software, perform the following steps;

1. Double-click the "Q-Lab X.X.X.msi" installation file that you copied to your local hard drive.
2. The **Q-Lab Setup Wizard** Window will appear, follow the installation prompts to install the software by selecting the **Next>** Button on each window that appears.
3. When the installation is complete, select the **Close** Button.




For Additional Help Contact  
 Trilithic Applications Engineering  
 1-800-344-2412 or 317-895-3600  
[support@trilithic.com](mailto:support@trilithic.com) or  
[www.trilithic.com](http://www.trilithic.com)

Installing Q-Lab and 8821Q-R Initial Connection  
 P/N 0010275045 – Rev 9/08  
 2 of 5

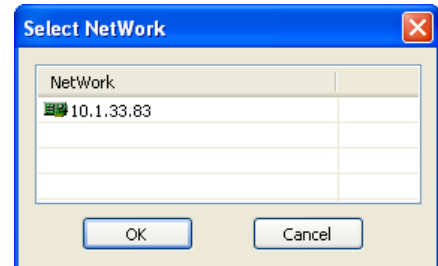
### Connect to the 8821Q-R Using Q-Lab

To connect to the 8821Q-R using the Q-Lab Software, perform the following steps;

1. Connect the PC or Laptop Computer to the 8821Q-R using either of the following methods;
  - Using an RJ-45 Network cross-over cable (*included with the 8821Q-R*) for direct connection to the PC or Laptop Computer.
  - Using an RJ-45 Network cable (*included with the 8821Q-R*) for connection through a router or network switch.

2. Launch the Q-Lab Software by double-clicking the **Q-Lab**  Icon on your Desktop.

3. The first time Q-Lab is run, the **Select Network** Window will appear, highlight the IP Address of the network, and then select the **OK** Button.

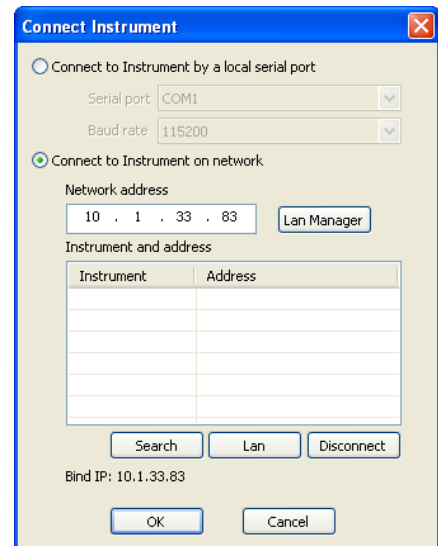


4. The **Connect Instrument** Window will appear. The IP address of the PC or laptop will be displayed above the **OK** Button.

5. Enter the IP Address of the 8821Q-R that you configured earlier into the **Network Address** Field.

6. Select the **OK** Button.

7. The Q-Lab Software is now connected to the 8821Q-R and the **Connect Manager** and **Remote Control** Windows will be displayed.





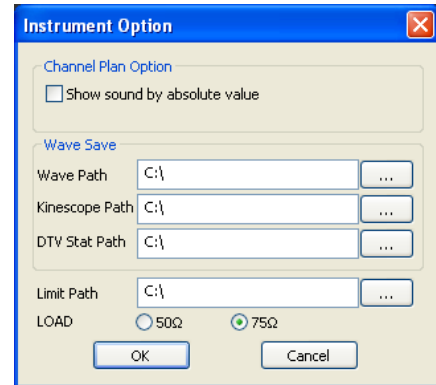
For Additional Help Contact  
 Trilithic Applications Engineering  
 1-800-344-2412 or 317-895-3600  
[support@trilithic.com](mailto:support@trilithic.com) or  
[www.trilithic.com](http://www.trilithic.com)

Installing Q-Lab and 8821Q-R Initial Connection  
 P/N 0010275045 – Rev 9/08  
 3 of 5

## Setting the Q-Lab Software Default Save Locations

To configure default save location of the Q-Lab Software, perform the following steps;

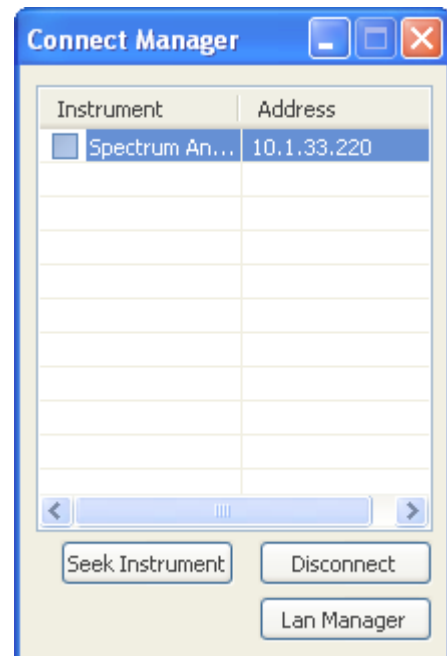
1. Select the **Options**  Button to open the **Instrument Option** Window.
2. Select the  Button to the right of each field to open the **Browse Folder** Window.
3. Navigate to the C:\Documents and Settings\\My Documents\Q-Lab\BMP directory and select the **OK** Button.
4. Select the **OK** Button when done changing the default save location for each field.



## Opening a Remote Connection

To remotely control the 8821Q-R using the Q-Lab Software, perform the following steps;

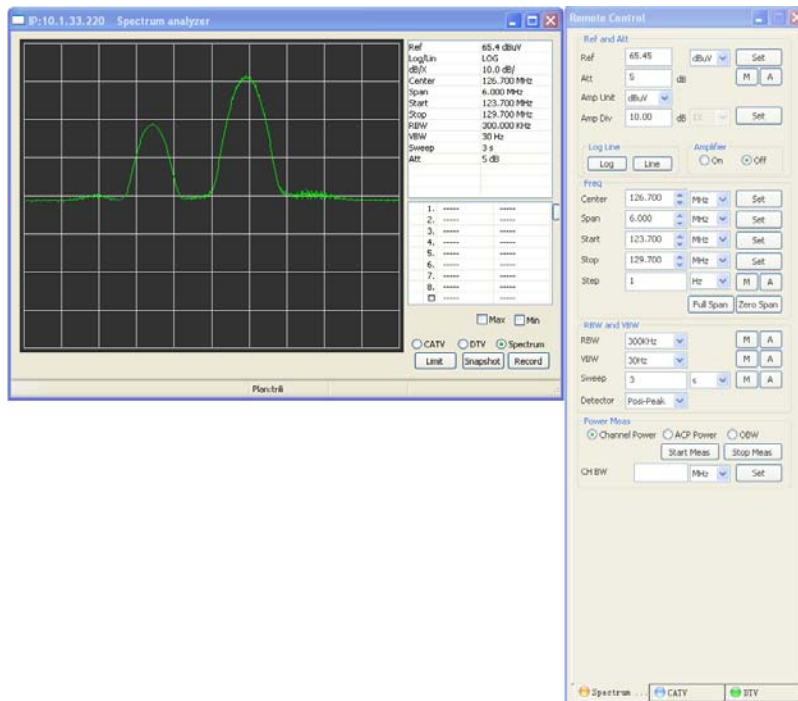
1. From within the **Connection Manager** Window, highlight the IP Address of the 8821Q-R that you are connected to.
2. Double-click the highlighted IP Address.



For Additional Help Contact  
 Trilithic Applications Engineering  
 1-800-344-2412 or 317-895-3600  
[support@trilithic.com](mailto:support@trilithic.com) or  
[www.trilithic.com](http://www.trilithic.com)

Installing Q-Lab and 8821Q-R Initial Connection  
 P/N 0010275045 – Rev 9/08  
 4 of 5

3. Once you are connected and controlling the 8821Q-R, the **Live Display** Window will appear as shown in the following figure.
  - By default, the **Live Display** Window will start in the **Spectrum Analyzer Mode**.
  - To change the measurement modes, select the **CATV**, **DTV**, or **Spectrum** Radio Button in the lower right corner of the Live Display Window.
  - The corresponding measurement controls will be made available in the **Remote Control** Window as shown in the following figure.



4. To disconnect the 8821Q-R from the Q-Lab Software, perform the following steps;
  - a. From the **Connect Manager** Window, select the check-box next to the IP Address of the connected 8821Q-R.
  - b. Select the **Disconnect** Button.

For Additional Help Contact  
 Trilithic Applications Engineering  
 1-800-344-2412 or 317-895-3600  
[support@trilithic.com](mailto:support@trilithic.com) or  
[www.trilithic.com](http://www.trilithic.com)

Installing Q-Lab and 8821Q-R Initial Connection  
 P/N 0010275045 – Rev 9/08  
 5 of 5