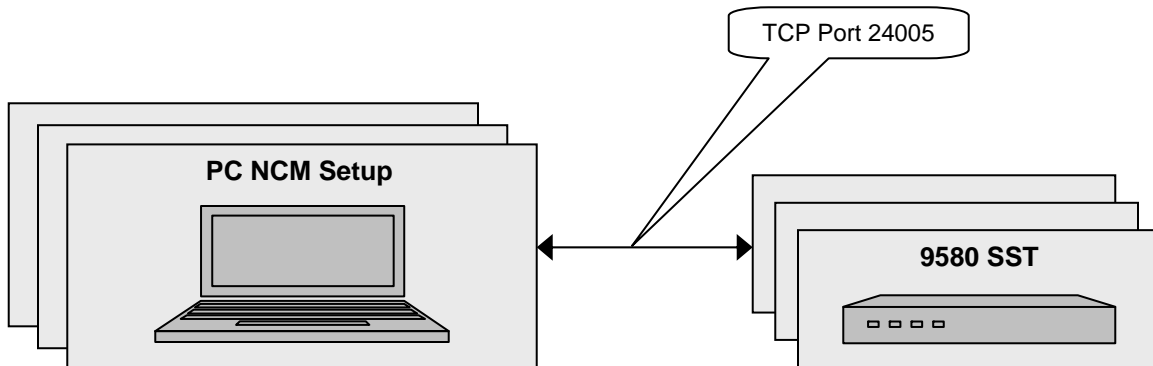
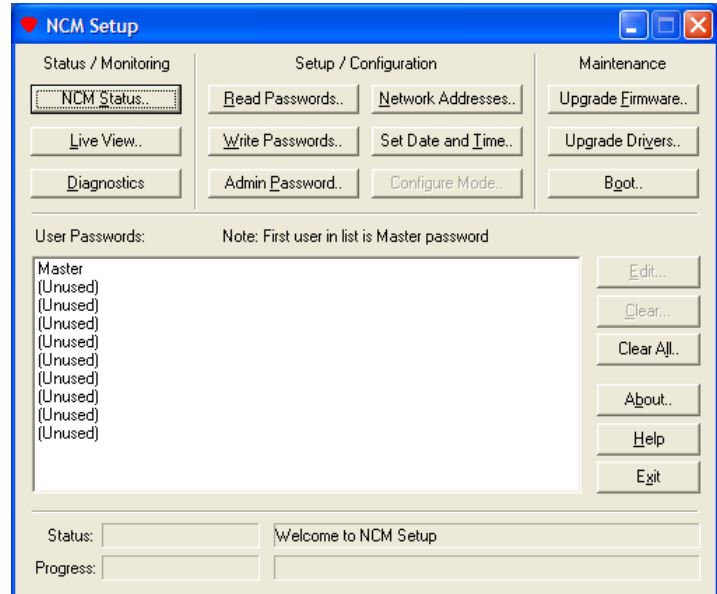


NCM Setup Ports and Protocols

The NCM Setup client uses TCP port 24005 to connect to and configure the 9580 SST.



For Additional Help Contact
Trilithic Applications Engineering
1-800-344-2412 or 317-895-3600
support@trilithic.com or
www.trilithic.com

NCM Setup Ports and Protocols
P/N 0010275043 – Rev 7/08
1 of 1